
FENWICK SOLAR FARM

Fenwick Solar Farm
EN010152

Statutory and Non-Statutory Historic Sites Plans
Document Reference: EN010152/APP/2.7

Regulation Reg 5(2)(m)
Infrastructure Planning (Applications: Prescribed Forms and Procedure)
Regulations 2009

October 2024
Revision Number: 00

Revision History

| Revision Number | Date | Details |
|------------------------|--------------|-----------------|
| 00 | October 2024 | DCO application |
| | | |
| | | |
| | | |
| | | |

Prepared for:
Fenwick Solar Project Limited

Prepared by:
AECOM Limited

© 2024 AECOM Limited. All Rights Reserved.

This document has been prepared by AECOM Limited ("AECOM") for sole use of our client (the "Client") in accordance with generally accepted consultancy principles, the budget for fees and the terms of reference agreed between AECOM and the Client. Any information provided by third parties and referred to herein has not been checked or verified by AECOM, unless otherwise expressly stated in the document. No third party may rely upon this document without the prior and express written agreement of AECOM.

PROJECT

Fenwick Solar Farm

CLIENT

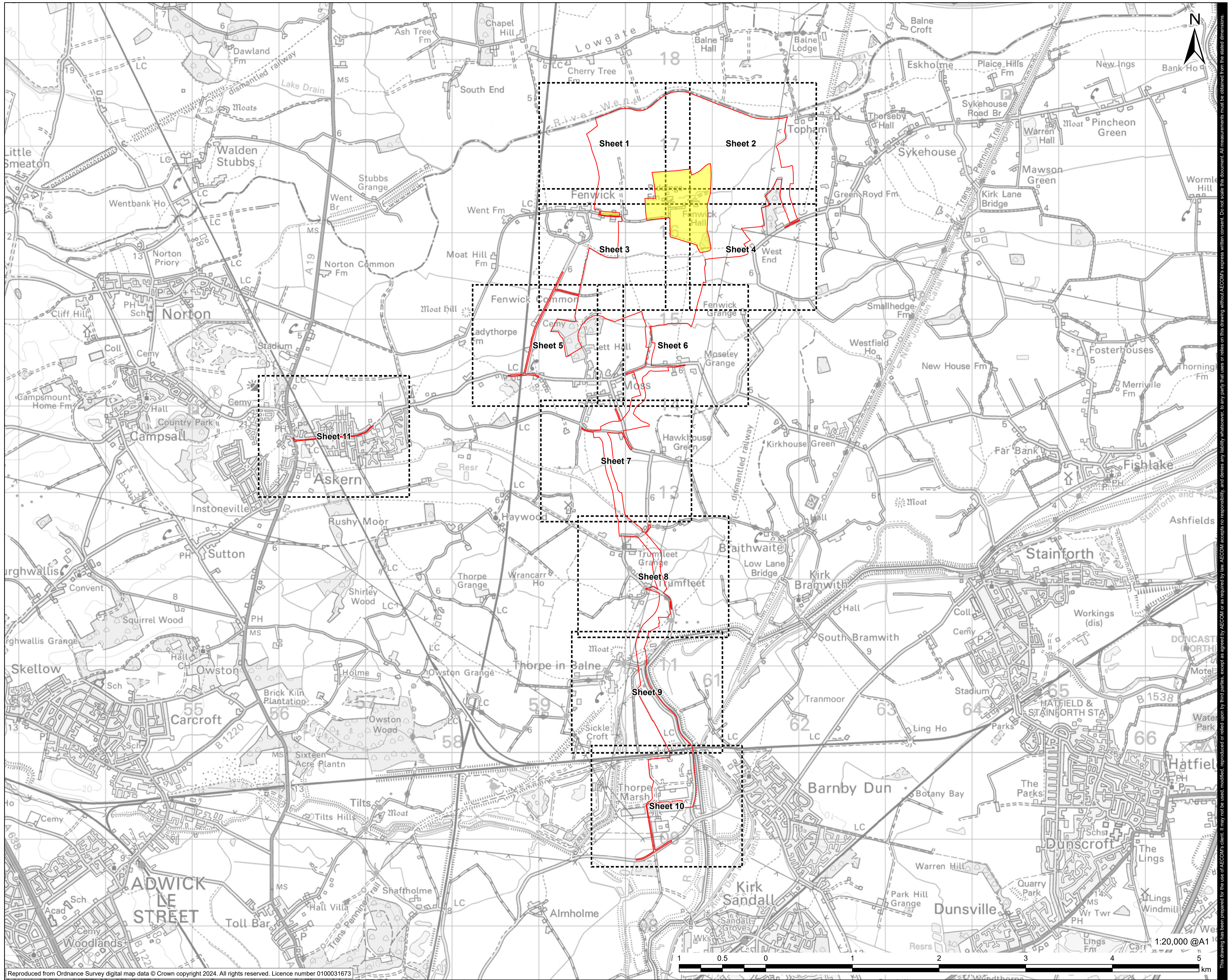
Fenwick Solar Project Limited

CONSULTANT

AECOM Limited
Midpoint
Alencon Link
Basingstoke, RG21 7PP
www.aecom.com

LEGEND

- Order limits
- Land not included in the Order limits
- Sheet Extent with Reference to Sheet Number



| | | | | |
|---------------------|-------|------|------------|---|
| FOR DCO APPLICATION | AK | JW | 01/10/2024 | 0 |
| REVISION DETAILS | BY | DATE | REV | |
| | CHECK | | | |

ISSUE PURPOSE

DCO Application

PROJECT NUMBER

60698207

PLAN TITLE

Statutory and Non-Statutory Sites or Features of the Historic Environment Sheet Extents

REFERENCE NUMBER

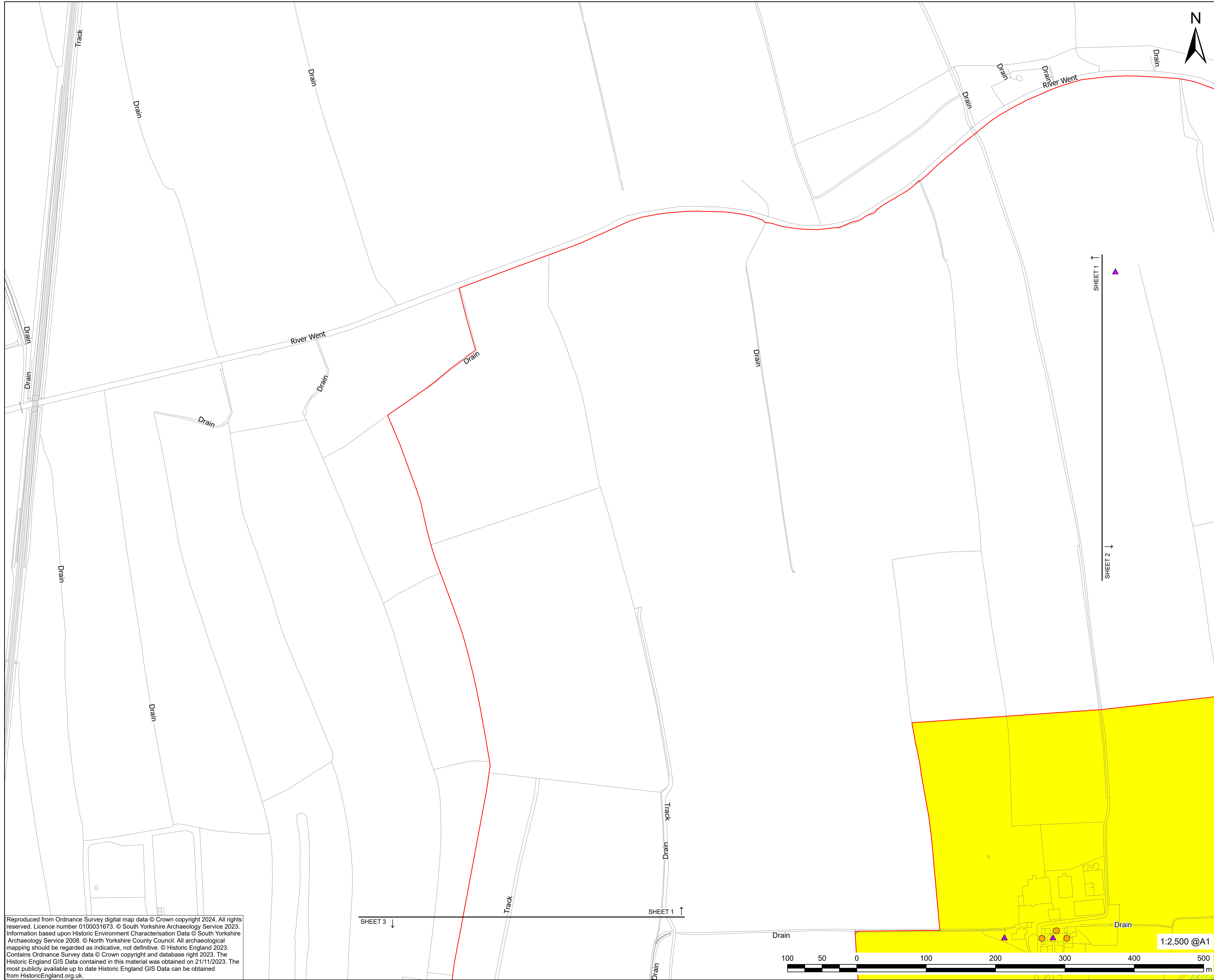
EN010152/APP/2.7

LEGISLATION REFERENCE

APFP 2009 Regulation 5(2)(m)

ISO A1 594mm x 841mm
 Revision: 0 Drawn: AK Checked: JW Approved: MS Date: 2024-10-24
 Filename: I:\60698207_Fenwick_Solar_Farm02_Maps\DCO\Dec_2_7_Statutory_and_Non_Statutory_Historic_sites_Plans\EN010152_APP2_7_Historic_Sites_Plan_v0_A1_apr

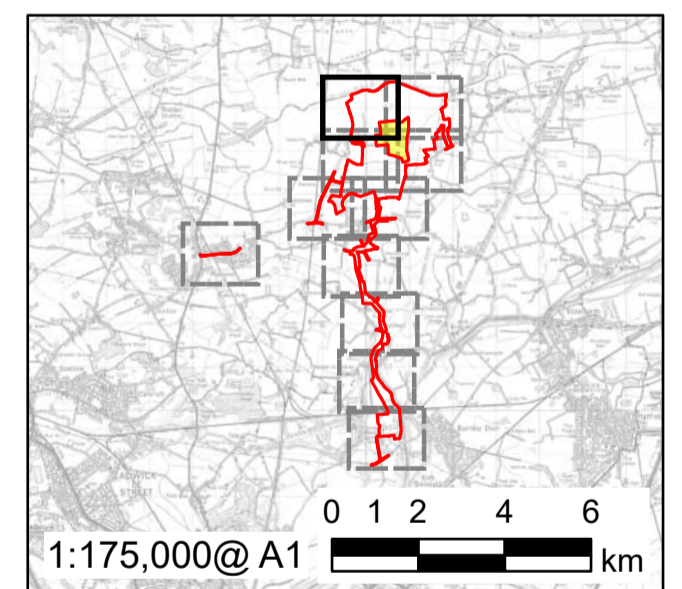
This drawing has been prepared for the use of AECOM's client. It may not be used, modified, reproduced or relied upon by third parties, except as agreed by AECOM. AECOM accepts no responsibility, and denies any liability whatsoever, to any party that uses or relies on this drawing without AECOM's express written consent. Do not scale this document. All measurements must be obtained from the stated dimensions.



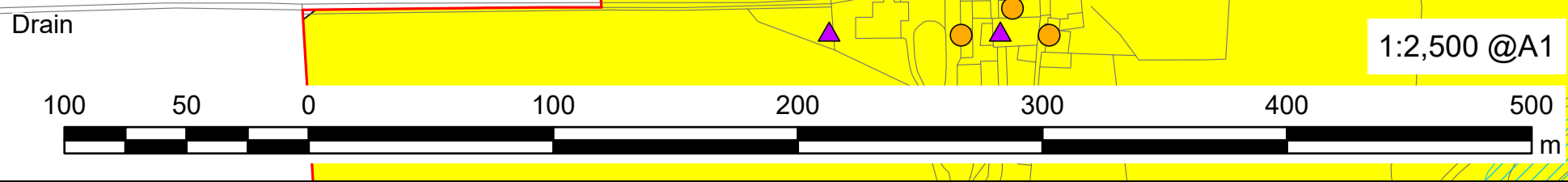
LEGEND

- Order limits
- Land not included in the Order limits
- Listed Building - Grade II
- Scheduled Monuments
- ▲ HER Monument (point)

Further information on Statutory and Non-Statutory Sites or Features of the Historic Environment is also included in the Environmental Statement figures [EN101152/6.2]



Reproduced from Ordnance Survey digital map data © Crown copyright 2024. All rights reserved. Licence number 0100031673. © South Yorkshire Archaeology Service 2023. Information based upon Historic Environment Characterisation Data © South Yorkshire Archaeology Service 2008. © North Yorkshire County Council. All archaeological mapping should be regarded as indicative, not definitive. © Historic England 2023. Contains Ordnance Survey data © Crown copyright and database right 2023. The Historic England GIS Data contained in this material was obtained on 21/11/2023. The most publicly available up to date Historic England GIS Data can be obtained from HistoricEngland.org.uk.



| | | | | |
|---------------------|----|-------|------------|-----|
| FOR DCO APPLICATION | AK | JW | 01/10/2024 | 0 |
| REVISION DETAILS | BY | CHECK | DATE | REV |

ISSUE PURPOSE
DCO Application

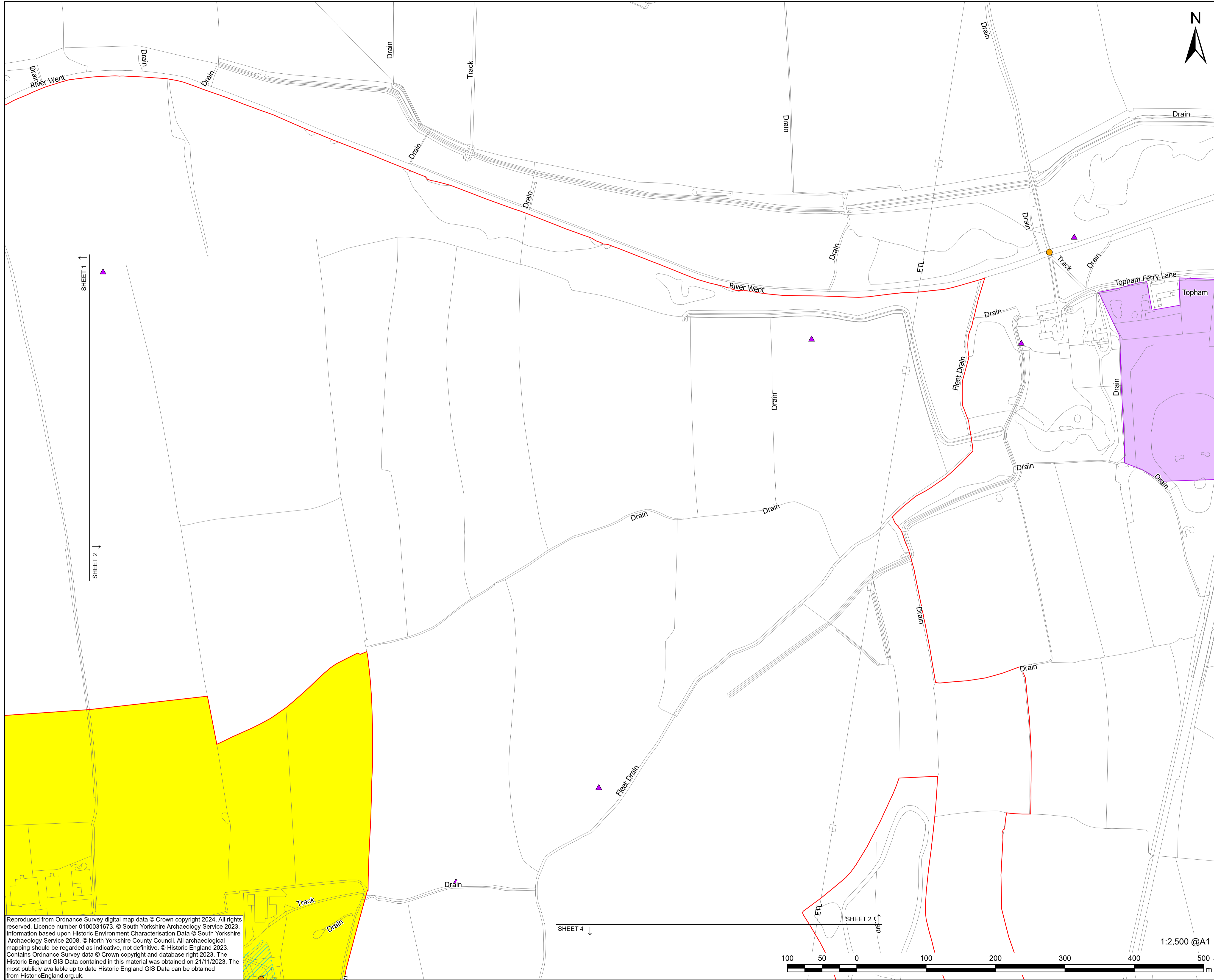
PROJECT NUMBER
60698207

PLAN TITLE
Statutory and Non-Statutory Sites or Features of the Historic Environment - Sheet 1 of 11

REFERENCE NUMBER
EN010152/APP/2.7

LEGISLATION REFERENCE
APFP 2009 Regulation 5(2)(m)

This drawing has been prepared for the use of AECOM's client. It may not be used, modified, reproduced or relied upon by third parties, except as agreed by AECOM or as required by AECOM or as required by law. AECOM accepts no responsibility, and denies any liability whatsoever, to any party that uses or relies on this drawing without AECOM's express written consent. Do not scale this document. All measurements must be obtained from the stated dimensions.



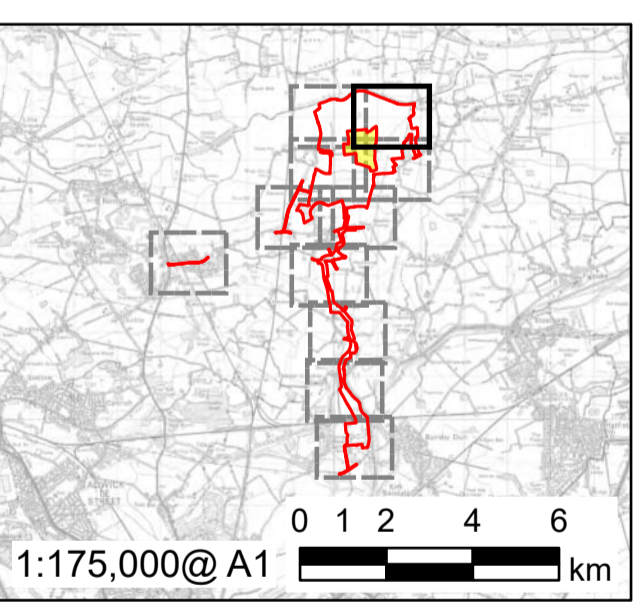
PROJECT
Fenwick Solar Farm

CLIENT
Fenwick Solar Project Limited

CONSULTANT
AECOM Limited
Midpoint
Alencon Link
Basingstoke, RG21 7PP
www.aecom.com

- LEGEND**
- Order limits
 - Land not included in the Order limits
 - Listed Building - Grade II
 - Scheduled Monuments
 - ▲ HER Monument (point)
 - HER Monument (polygon)

Further information on Statutory and Non-Statutory Sites or Features of the Historic Environment is also included in the Environmental Statement figures [EN101152/6.2]



Reproduced from Ordnance Survey digital map data © Crown copyright 2024. All rights reserved. Licence number 0100031673. © South Yorkshire Archaeology Service 2023. Information based upon Historic Environment Characterisation Data © South Yorkshire Archaeology Service 2008. © North Yorkshire County Council. All archaeological mapping should be regarded as indicative, not definitive. © Historic England 2023. Contains Ordnance Survey data © Crown copyright and database right 2023. The Historic England GIS Data contained in this material was obtained on 21/11/2023. The most publicly available up to date Historic England GIS Data can be obtained from HistoricEngland.org.uk.



| | | | | |
|---------------------|----|-------|------------|-----|
| FOR DCO APPLICATION | AK | ZW | 01/10/2024 | 0 |
| REVISION DETAILS | BY | CHECK | DATE | REV |

ISSUE PURPOSE
DCO Application

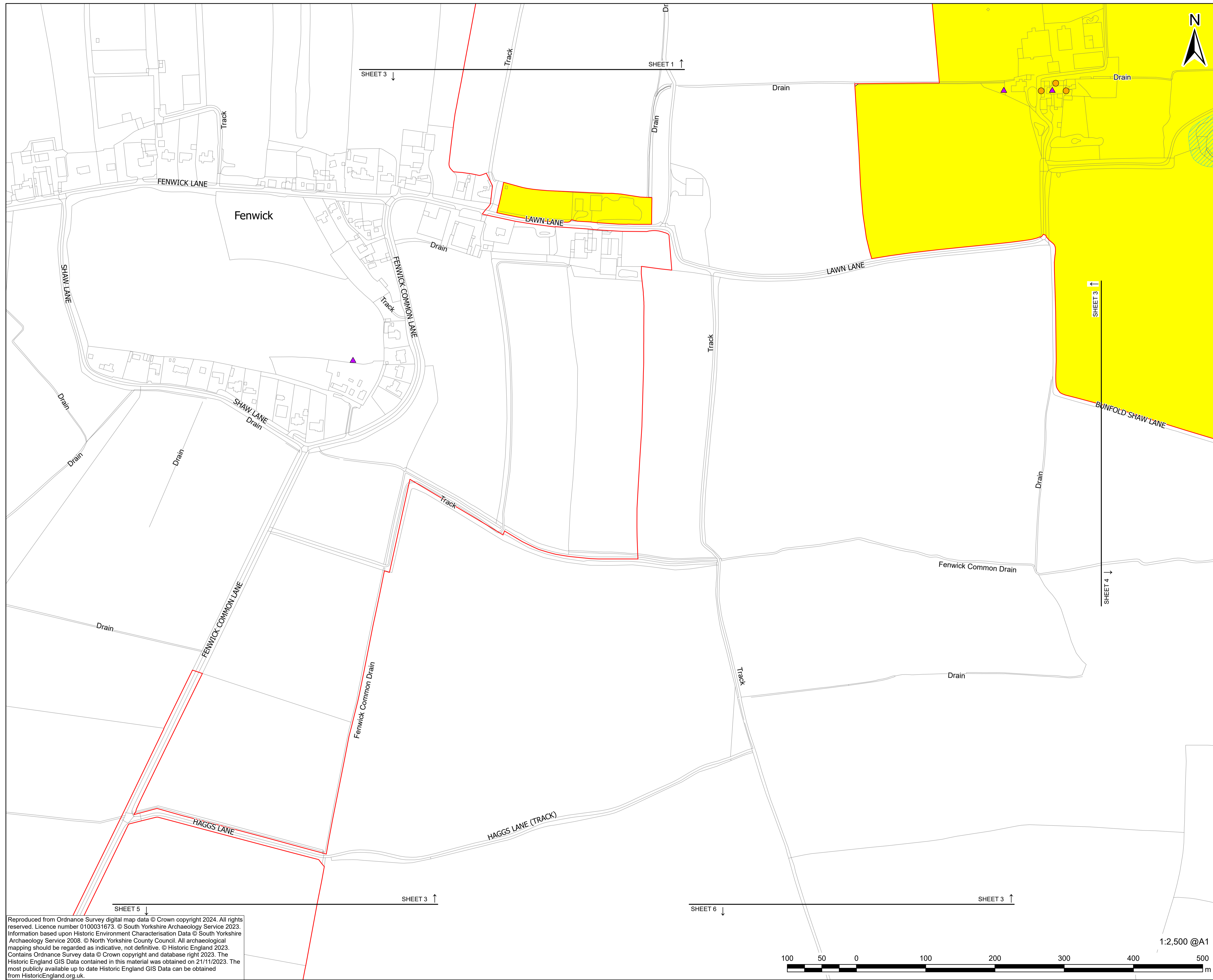
PROJECT NUMBER
60698207

PLAN TITLE
Statutory and Non-Statutory Sites or Features of the Historic Environment - Sheet 2 of 11

REFERENCE NUMBER
EN010152/APP/2.7

LEGISLATION REFERENCE
APFP 2009 Regulation 5(2)(m)

This drawing has been prepared for the use of AECOM's client. It may not be used, modified, reproduced or relied upon by third parties, except as agreed by AECOM or as required by AECOM, and denies any liability whatsoever to any party that uses or relies on this drawing without AECOM's express written consent. Do not scale this document. All measurements must be obtained from the stated dimensions.



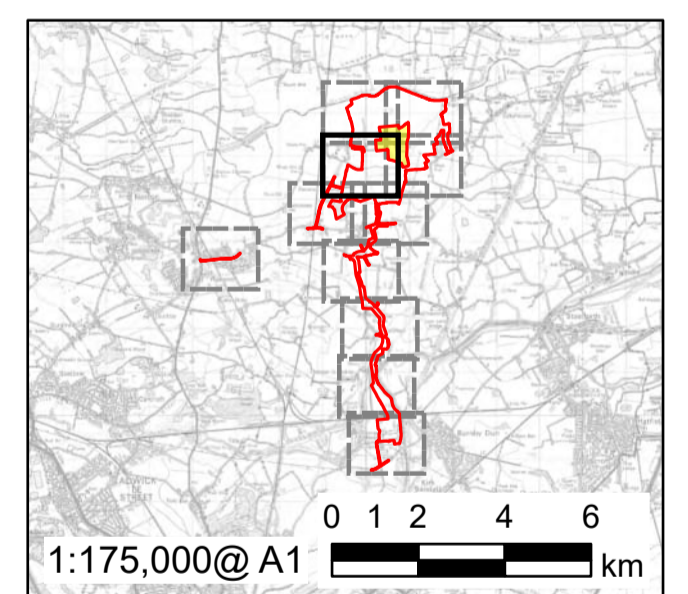
PROJECT
Fenwick Solar Farm

CLIENT
Fenwick Solar Project Limited

CONSULTANT
AECOM Limited
Midpoint
Alencon Link
Basingstoke, RG21 7PP
www.aecom.com

- LEGEND**
- Order limits
 - Land not included in the Order limits
 - Listed Building - Grade II
 - Scheduled Monuments
 - ▲ HER Monument (point)

Further information on Statutory and Non-Statutory Sites or Features of the Historic Environment is also included in the Environmental Statement figures [EN101152/6.2]



| | | | | |
|---------------------|----|-------|------------|-----|
| FOR DCO APPLICATION | AK | ZW | 01/10/2024 | 0 |
| REVISION DETAILS | BY | CHECK | DATE | REV |

ISSUE PURPOSE

DCO Application

PROJECT NUMBER

60698207

PLAN TITLE

Statutory and Non-Statutory Sites or Features of the Historic Environment - Sheet 3 of 11

REFERENCE NUMBER

EN010152/APP/2.7

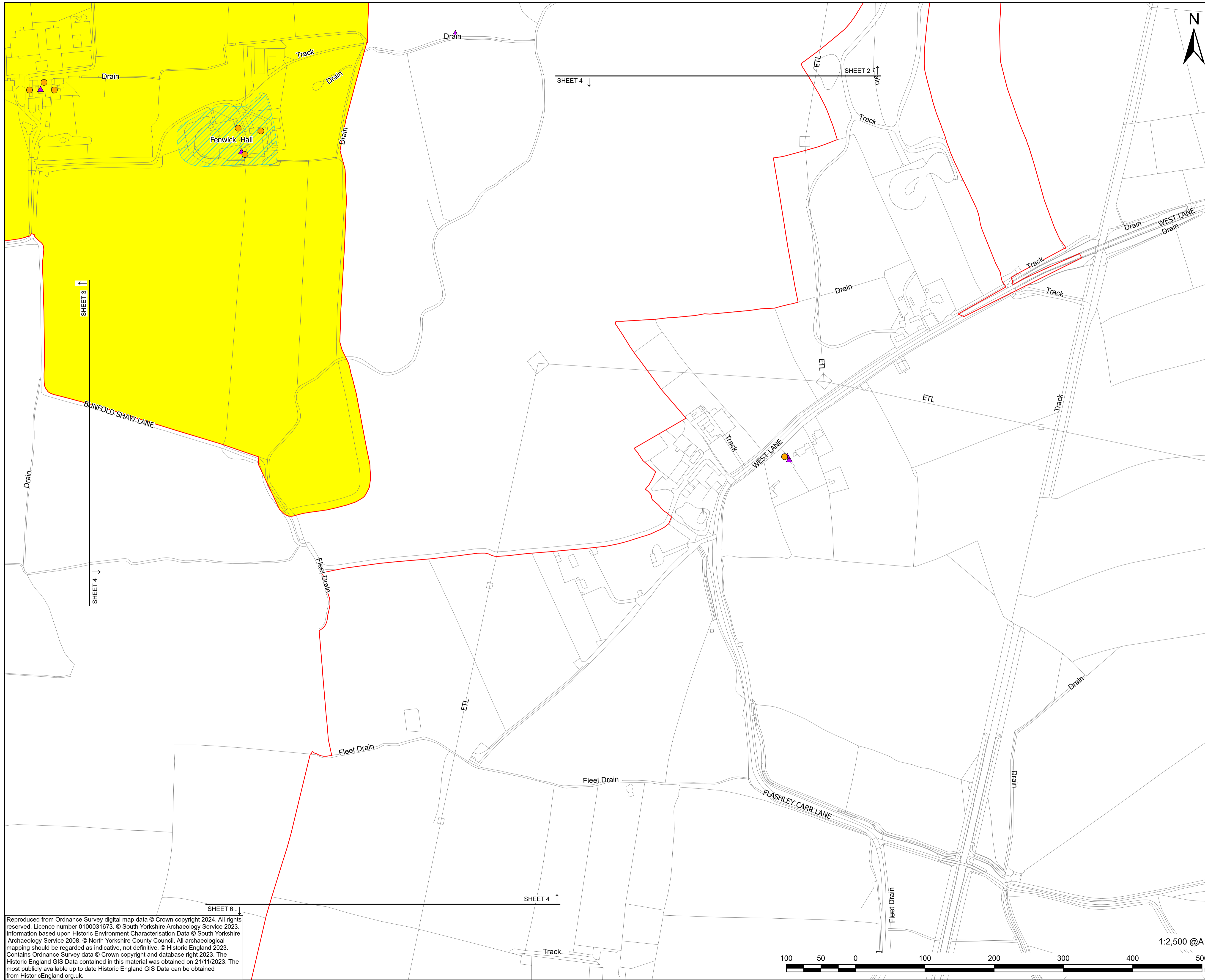
LEGISLATION REFERENCE

APFP 2009 Regulation 5(2)(m)

Reproduced from Ordnance Survey digital map data © Crown copyright 2024. All rights reserved. Licence number 0100031673. © South Yorkshire Archaeology Service 2023. Information based upon Historic Environment Characterisation Data © South Yorkshire Archaeology Service 2008. © North Yorkshire County Council. All archaeological mapping should be regarded as indicative, not definitive. © Historic England 2023. Contains Ordnance Survey data © Crown copyright and database right 2023. The Historic England GIS Data contained in this material was obtained on 21/11/2023. The most publicly available up to date Historic England GIS Data can be obtained from HistoricEngland.org.uk.



This drawing has been prepared for the use of AECOM's client. It may not be used, modified, reproduced or relied upon by third parties, except as agreed by AECOM or as required by AECOM or as required by law. AECOM accepts no responsibility, and denies any liability whatsoever, to any party that uses or relies on this drawing without AECOM's express written consent. Do not scale this document. All measurements must be obtained from the stated dimensions.



PROJECT

Fenwick Solar Farm

CLIENT

Fenwick Solar Project Limited

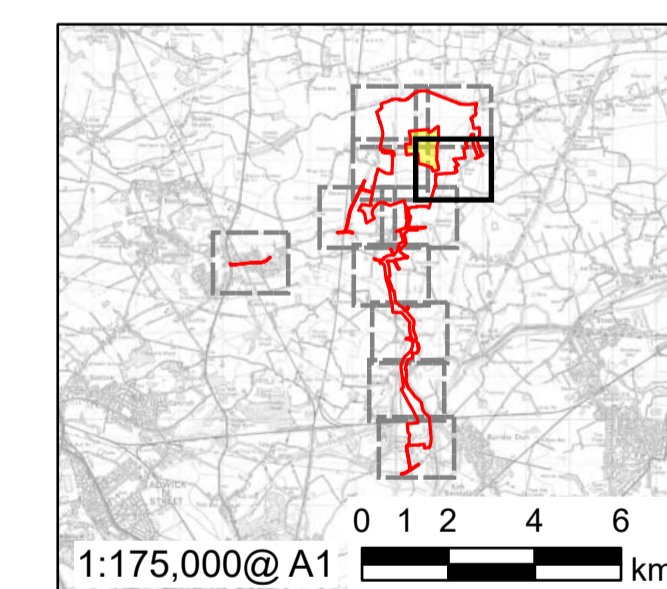
CONSULTANT

AECOM Limited
Midpoint
Alencon Link
Basingstoke, RG21 7PP
www.aecom.com

LEGEND

- Order limits
- Land not included in the Order limits
- Listed Building - Grade II
- Scheduled Monuments
- ▲ HER Monument (point)

Further information on Statutory and Non-Statutory Sites or Features of the Historic Environment is also included in the Environmental Statement figures [EN101152/6.2]



| | | | | |
|---------------------|----|-------|------------|-----|
| FOR DCO APPLICATION | AK | JW | 01/10/2024 | 0 |
| REVISION DETAILS | BY | CHECK | DATE | REV |

ISSUE PURPOSE

DCO Application

PROJECT NUMBER

60698207

PLAN TITLE

Statutory and Non-Statutory Sites or Features of the Historic Environment - Sheet 4 of 11

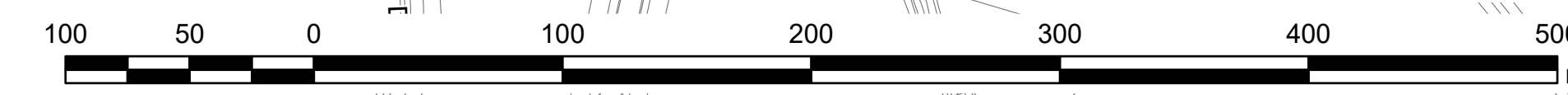
REFERENCE NUMBER

EN010152/APP/2.7

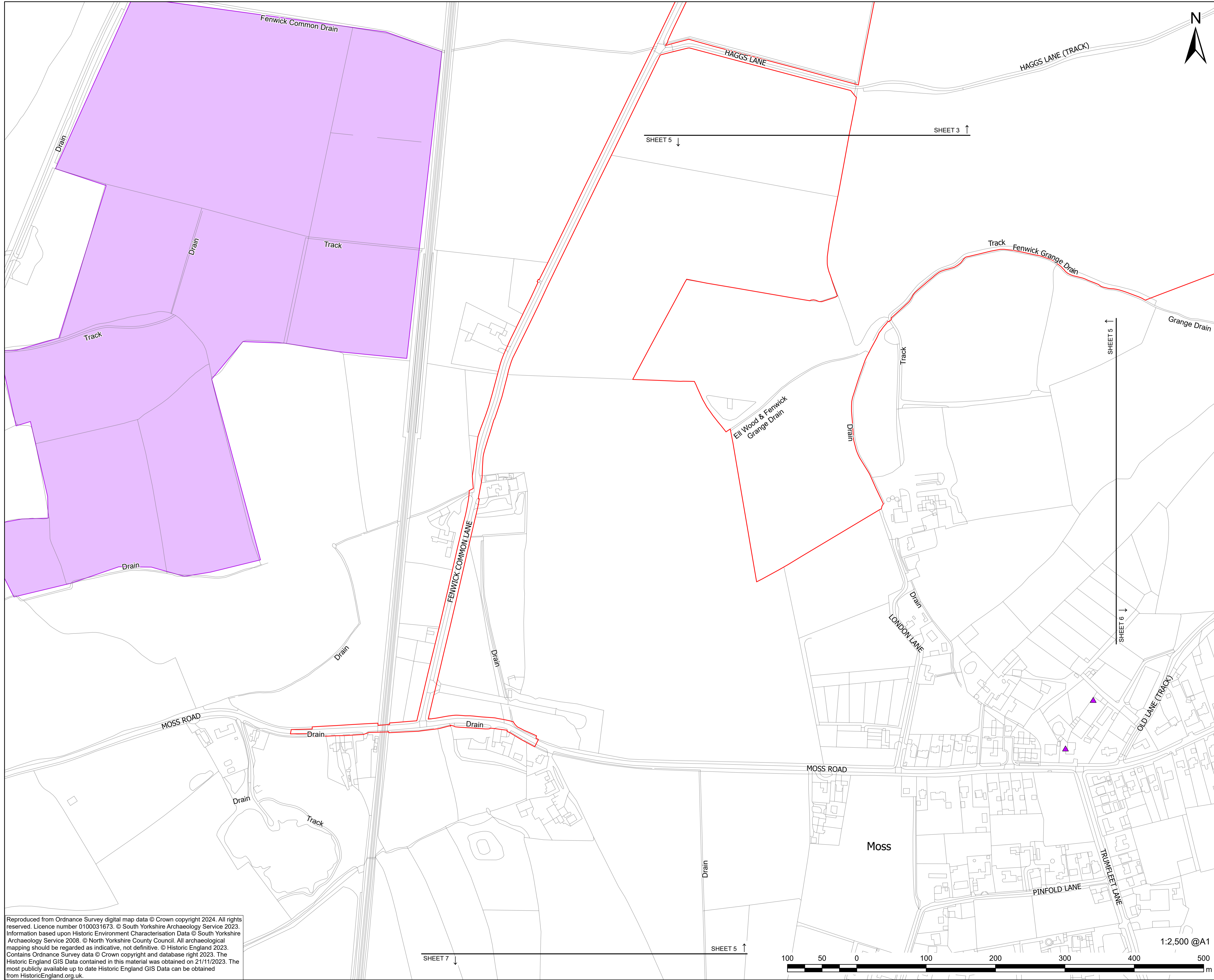
LEGISLATION REFERENCE

APFP 2009 Regulation 5(2)(m)

Reproduced from Ordnance Survey digital map data © Crown copyright 2024. All rights reserved. Licence number 0100031673. © South Yorkshire Archaeology Service 2023. Information based upon Historic Environment Characterisation Data © South Yorkshire Archaeology Service 2008. © North Yorkshire County Council. All archaeological mapping should be regarded as indicative, not definitive. © Historic England 2023. Contains Ordnance Survey data © Crown copyright and database right 2023. The Historic England GIS Data contained in this material was obtained on 21/11/2023. The most publicly available up to date Historic England GIS Data can be obtained from HistoricEngland.org.uk.



This drawing has been prepared for the use of AECOM's client. It may not be used, modified, reproduced or relied upon by third parties, except as agreed by AECOM or as required by AECOM, and denotes any liability whatsoever to any party that uses or relies on this drawing without AECOM's express written consent. Do not scale this document. All measurements must be obtained from the stated dimensions.



PROJECT
Fenwick Solar Farm

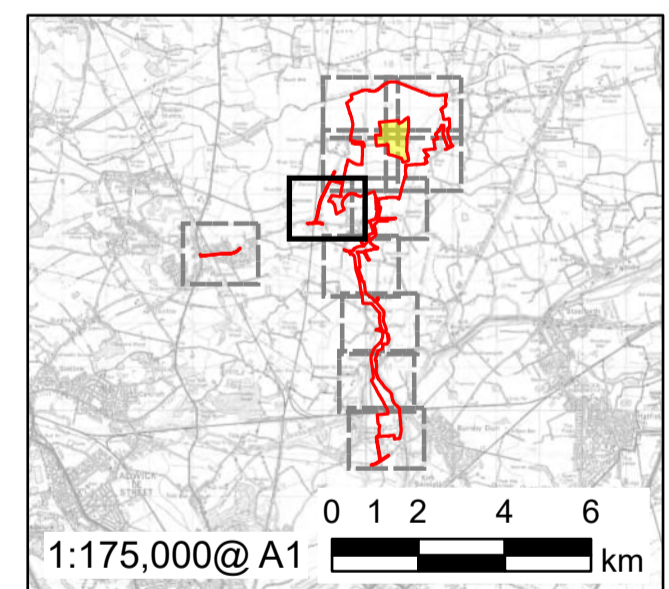
CLIENT
Fenwick Solar Project Limited

CONSULTANT
AECOM Limited
Midpoint
Alencon Link
Basingstoke, RG21 7PP
www.aecom.com

LEGEND

- Order limits
- ▲ HER Monument (point)
- HER Monument (polygon)

Further information on Statutory and Non-Statutory Sites or Features of the Historic Environment is also included in the Environmental Statement figures [EN101152/6.2]



Reproduced from Ordnance Survey digital map data © Crown copyright 2024. All rights reserved. Licence number 0100031673. © South Yorkshire Archaeology Service 2023. Information based upon Historic Environment Characterisation Data © South Yorkshire Archaeology Service 2008. © North Yorkshire County Council. All archaeological mapping should be regarded as indicative, not definitive. © Historic England 2023. Contains Ordnance Survey data © Crown copyright and database right 2023. The Historic England GIS Data contained in this material was obtained on 21/11/2023. The most publicly available up to date Historic England GIS Data can be obtained from HistoricEngland.org.uk.

| | | | | |
|---------------------|----|-------|------------|-----|
| FOR DCO APPLICATION | AK | JW | 01/10/2024 | 0 |
| REVISION DETAILS | BY | CHECK | DATE | REV |

ISSUE PURPOSE
DCO Application

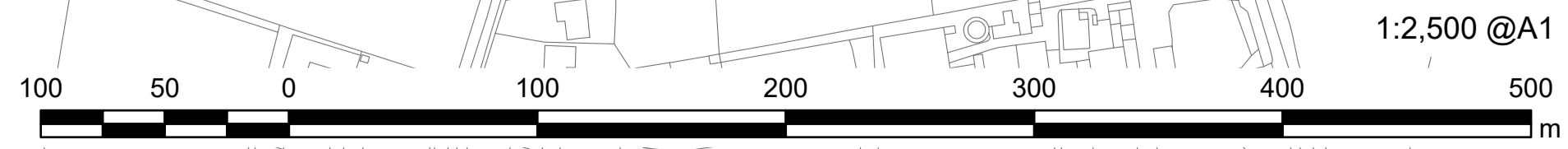
PROJECT NUMBER
60698207

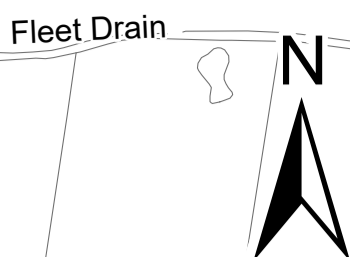
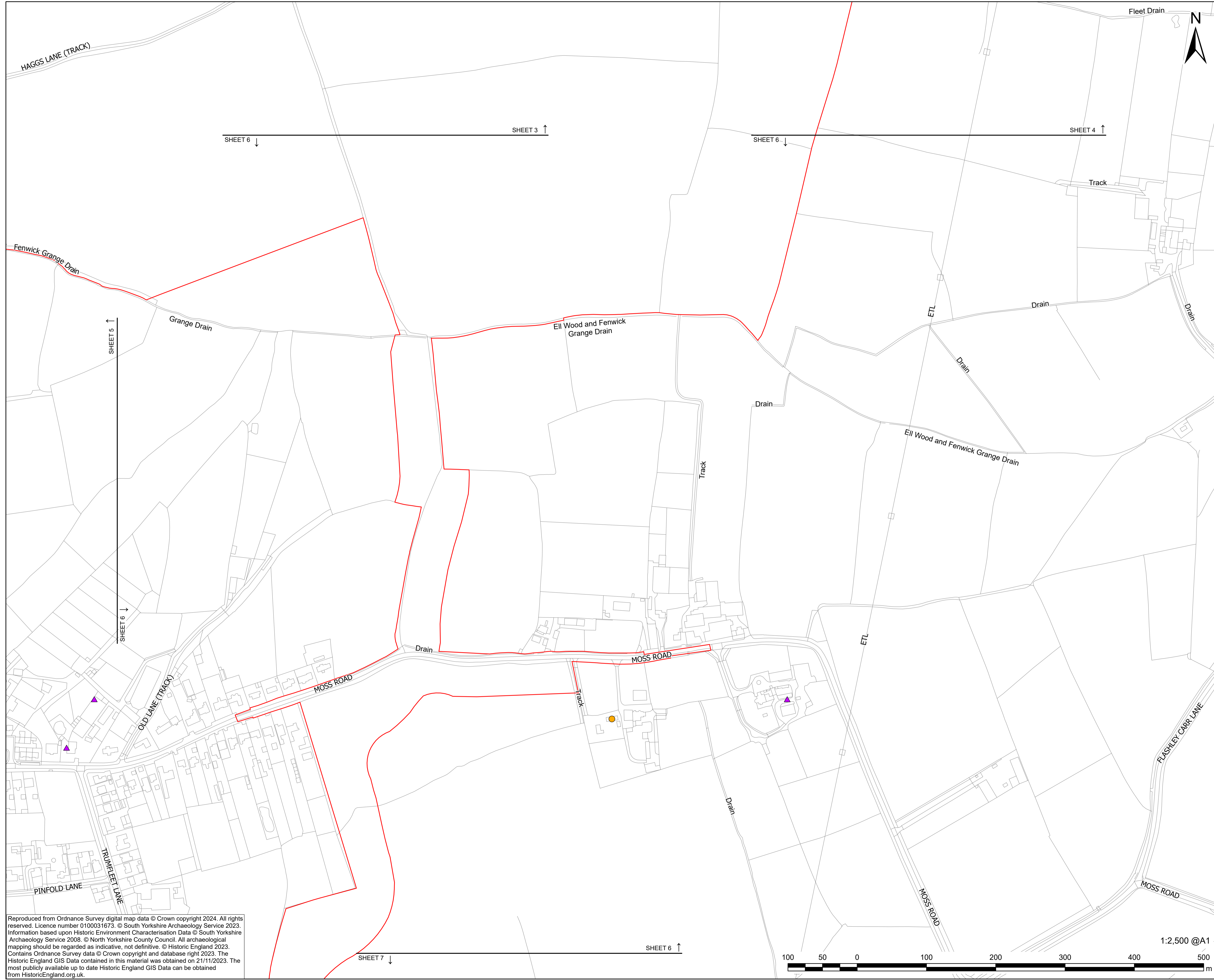
PLAN TITLE
Statutory and Non-Statutory Sites or Features of the Historic Environment - Sheet 5 of 11

REFERENCE NUMBER
EN10152/APP/2.7

LEGISLATION REFERENCE
APFP 2009 Regulation 5(2)(m)

This drawing has been prepared for the use of AECOM's client. It may not be used, modified, reproduced or relied upon by third parties, except as agreed by AECOM or as required by AECOM, and AECOM accepts no responsibility, and denies any liability whatsoever, to any party that uses or relies on this drawing without AECOM's express written consent. Do not scale this document. All measurements must be obtained from the stated dimensions.





PROJECT

Fenwick Solar Farm

CLIENT

Fenwick Solar Project Limited

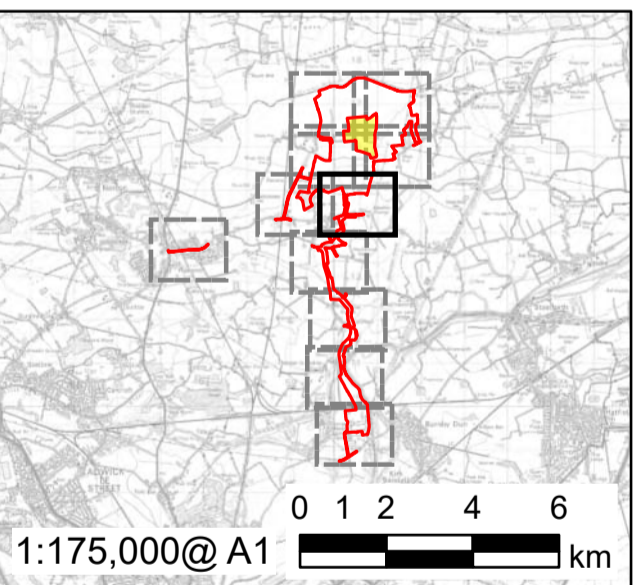
CONSULTANT

AECOM Limited
 Midpoint
 Alencon Link
 Basingstoke, RG21 7PP
 www.aecom.com

LEGEND

- Order limits
- Listed Building - Grade II
- ▲ HER Monument (point)

Further information on Statutory and Non-Statutory Sites or Features of the Historic Environment is also included in the Environmental Statement figures [EN101152/6.2]



Reproduced from Ordnance Survey digital map data © Crown copyright 2024. All rights reserved. Licence number 0100031673. © South Yorkshire Archaeology Service 2023. Information based upon Historic Environment Characterisation Data © South Yorkshire Archaeology Service 2008. © North Yorkshire County Council. All archaeological mapping should be regarded as indicative, not definitive. © Historic England 2023. Contains Ordnance Survey data © Crown copyright and database right 2023. The Historic England GIS Data contained in this material was obtained on 21/11/2023. The most publicly available up to date Historic England GIS Data can be obtained from HistoricEngland.org.uk.

| | | | | |
|---------------------|----|-------|------------|-----|
| FOR DCO APPLICATION | AK | JW | 01/10/2024 | 0 |
| REVISION DETAILS | BY | CHECK | DATE | REV |

ISSUE PURPOSE

DCO Application

PROJECT NUMBER

60698207

PLAN TITLE

Statutory and Non-Statutory Sites or Features of the Historic Environment - Sheet 6 of 11

REFERENCE NUMBER

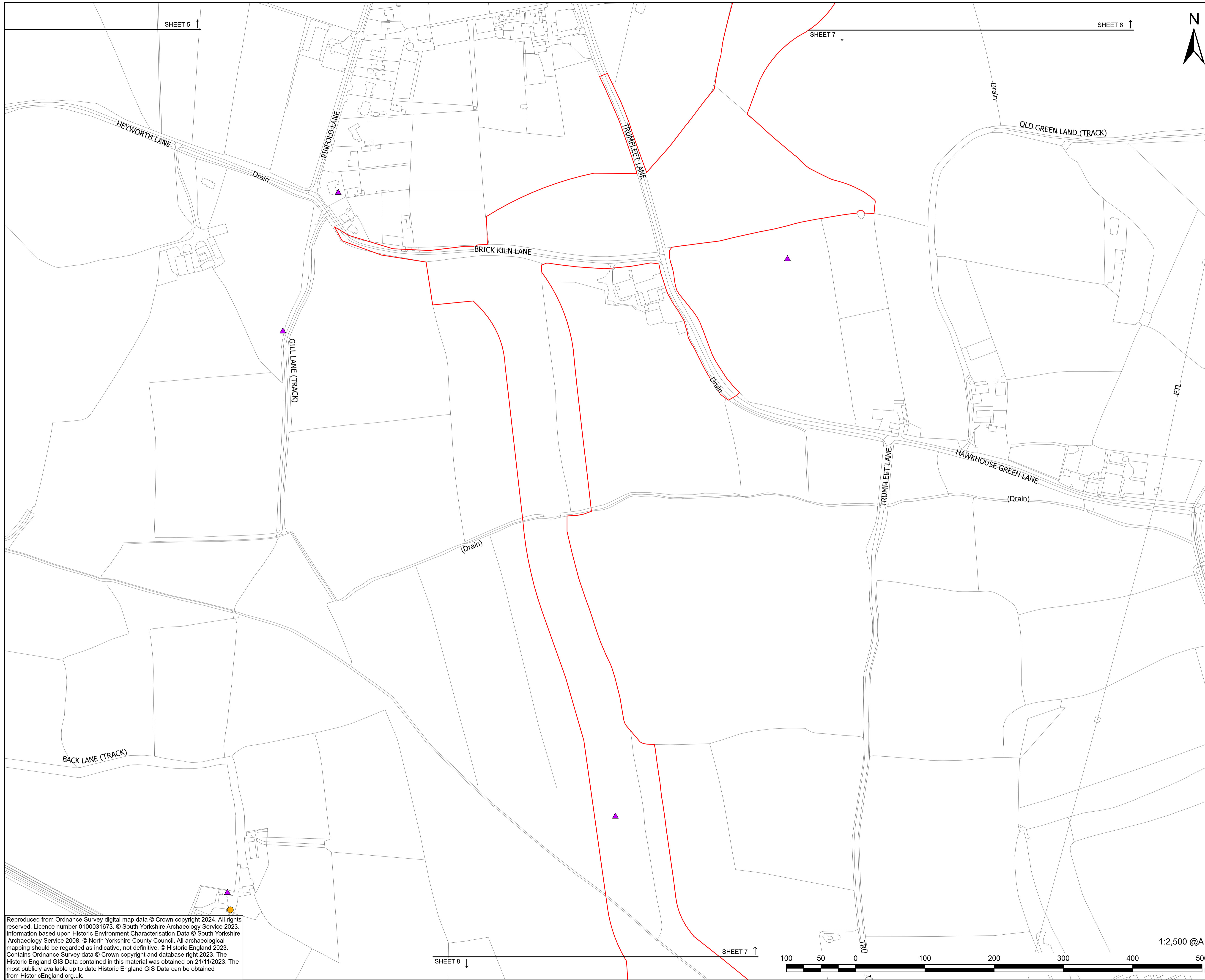
EN10152/APP/2.7

LEGISLATION REFERENCE

APFP 2009 Regulation 5(2)(m)



This drawing has been prepared for the use of AECOM's client. It may not be used, modified, reproduced or relied upon by third parties, except as agreed by AECOM or as required by AECOM, and denotes any liability whatsoever, to any party that uses or relies on this drawing without AECOM's express written consent. Do not scale this document. All measurements must be obtained from the stated dimensions.



PROJECT

Fenwick Solar Farm

CLIENT

Fenwick Solar Project Limited

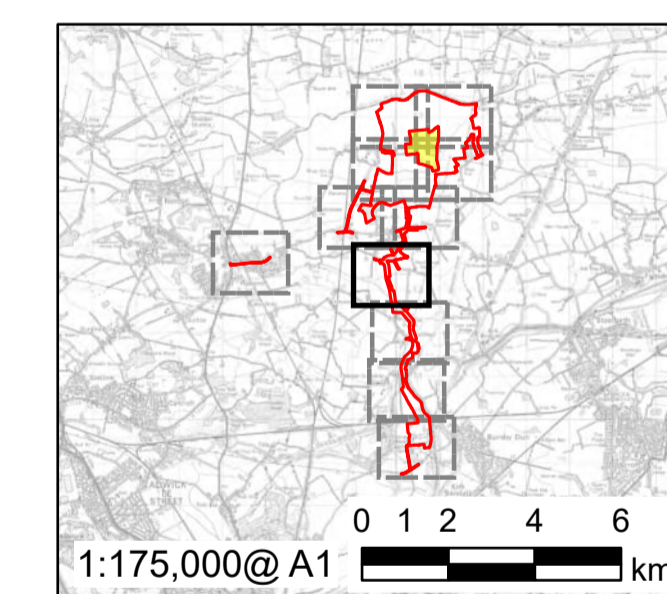
CONSULTANT

AECOM Limited
Midpoint
Alencon Link
Basingstoke, RG21 7PP
www.aecom.com

LEGEND

- Order limits
- Listed Building - Grade II
- ▲ HER Monument (point)

Further information on Statutory and Non-Statutory Sites or Features of the Historic Environment is also included in the Environmental Statement figures [EN101152/6.2]



Reproduced from Ordnance Survey digital map data © Crown copyright 2024. All rights reserved. Licence number 0100031673. © South Yorkshire Archaeology Service 2023. Information based upon Historic Environment Characterisation Data © South Yorkshire Archaeology Service 2008. © North Yorkshire County Council. All archaeological mapping should be regarded as indicative, not definitive. © Historic England 2023. Contains Ordnance Survey data © Crown copyright and database right 2023. The Historic England GIS Data contained in this material was obtained on 21/11/2023. The most publicly available up to date Historic England GIS Data can be obtained from HistoricEngland.org.uk.

| | | | | |
|---------------------|----|-------|------------|-----|
| FOR DCO APPLICATION | AK | JW | 01/10/2024 | 0 |
| REVISION DETAILS | BY | CHECK | DATE | REV |

ISSUE PURPOSE

DCO Application

PROJECT NUMBER

60698207

PLAN TITLE

Statutory and Non-Statutory Sites or Features of the Historic Environment - Sheet 7 of 11

REFERENCE NUMBER

EN10152/APP/2.7

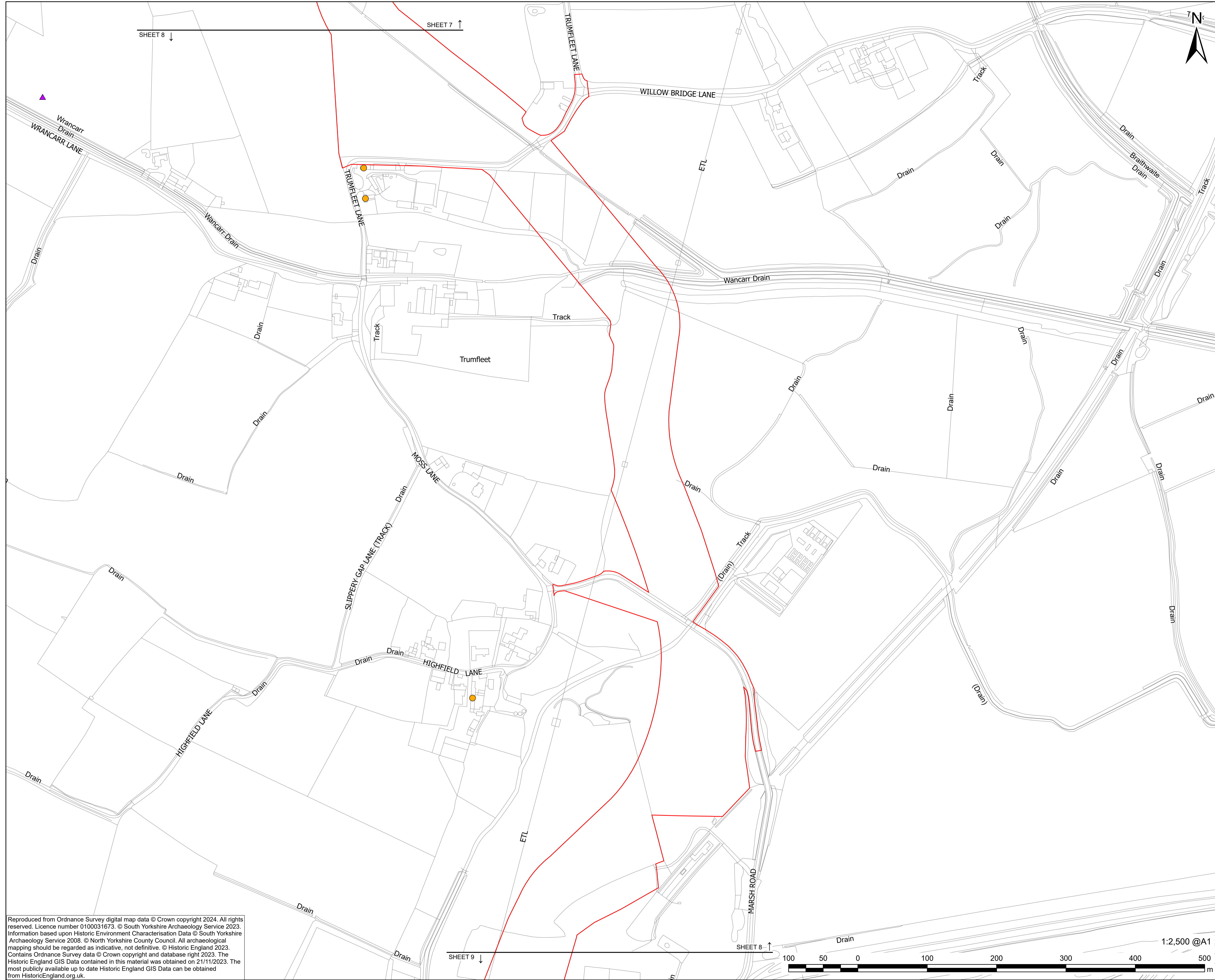
LEGISLATION REFERENCE

APFP 2009 Regulation 5(2)(m)

1:2,500 @A1



This drawing has been prepared for the use of AECOM's client. It may not be used, modified, reproduced or relied upon by third parties, except as agreed by AECOM or as required by AECOM, and denotes any liability whatsoever, and denies any liability whatsoever, to any party that uses or relies on this drawing without AECOM's express written consent. Do not scale this document. All measurements must be obtained from the stated dimensions.



AECOM

PROJECT
Fenwick Solar Farm

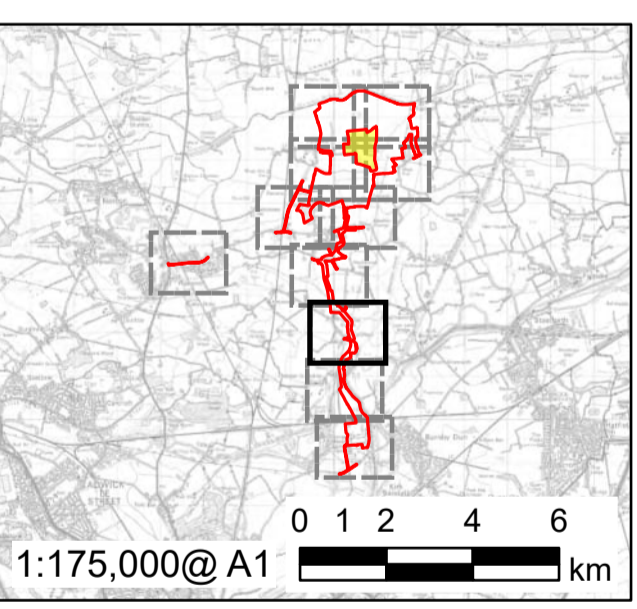
CLIENT
Fenwick Solar Project Limited

CONSULTANT
AECOM Limited
Midpoint
Alencon Link
Basingstoke, RG21 7PP
www.aecom.com

LEGEND

- Order limits
- Listed Building - Grade II
- ▲ HER Monument (point)

Further information on Statutory and Non-Statutory Sites or Features of the Historic Environment is also included in the Environmental Statement figures [EN101152/6.2]



Reproduced from Ordnance Survey digital map data © Crown copyright 2024. All rights reserved. Licence number 0100031673. © South Yorkshire Archaeology Service 2023. Information based upon Historic Environment Characterisation Data © South Yorkshire Archaeology Service 2008. © North Yorkshire County Council. All archaeological mapping should be regarded as indicative, not definitive. © Historic England 2023. Contains Ordnance Survey data © Crown copyright and database right 2023. The Historic England GIS Data contained in this material was obtained on 21/11/2023. The most publicly available up to date Historic England GIS Data can be obtained from HistoricEngland.org.uk.

| | | | | |
|---------------------|----|-------|------------|-----|
| FOR DCO APPLICATION | AK | JW | 01/10/2024 | 0 |
| REVISION DETAILS | BY | CHECK | DATE | REV |

ISSUE PURPOSE
DCO Application

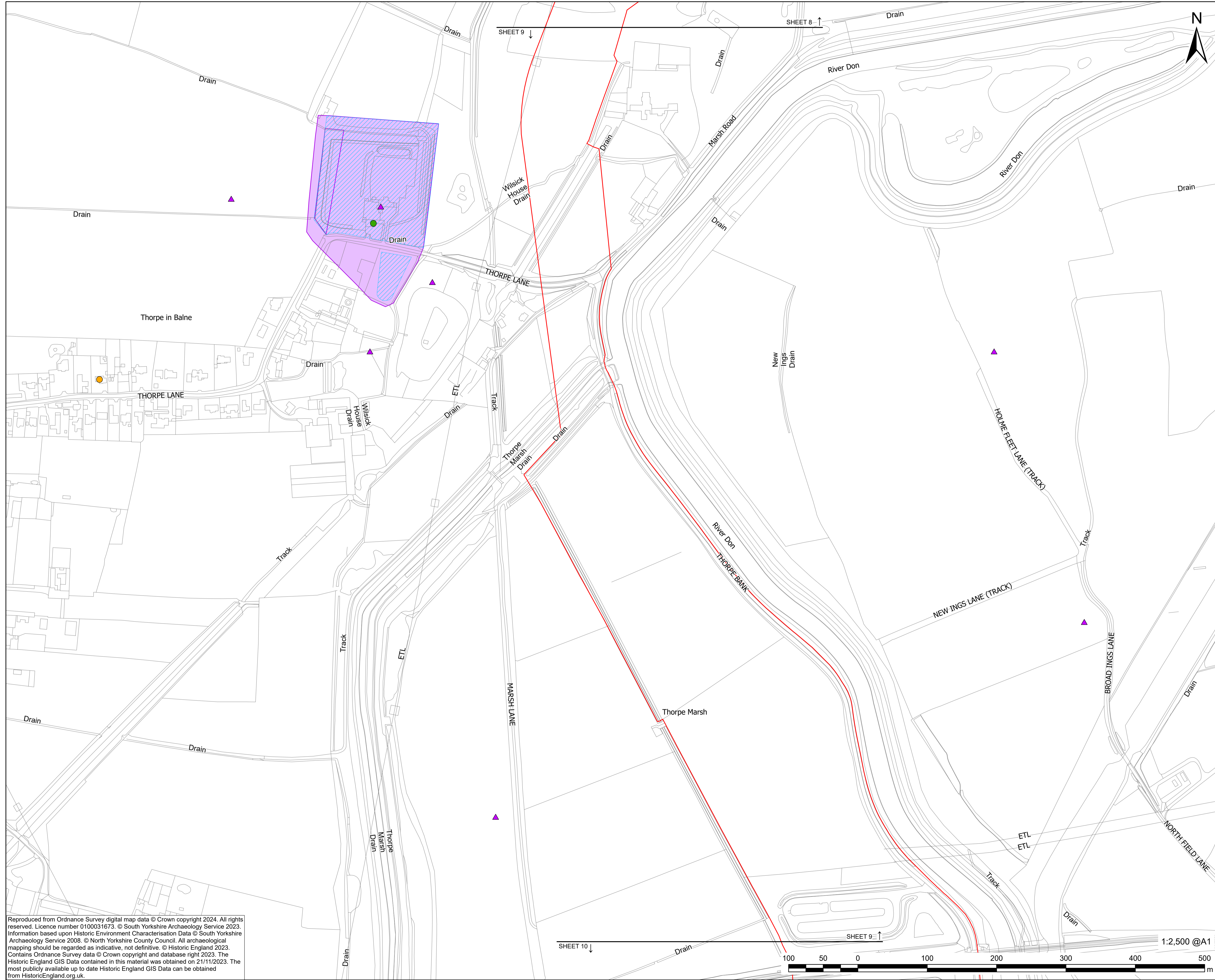
PROJECT NUMBER
60698207

PLAN TITLE
Statutory and Non-Statutory Sites or Features of the Historic Environment - Sheet 8 of 11

REFERENCE NUMBER
EN010152/APP/2.7

LEGISLATION REFERENCE
APFP 2009 Regulation 5(2)(m)

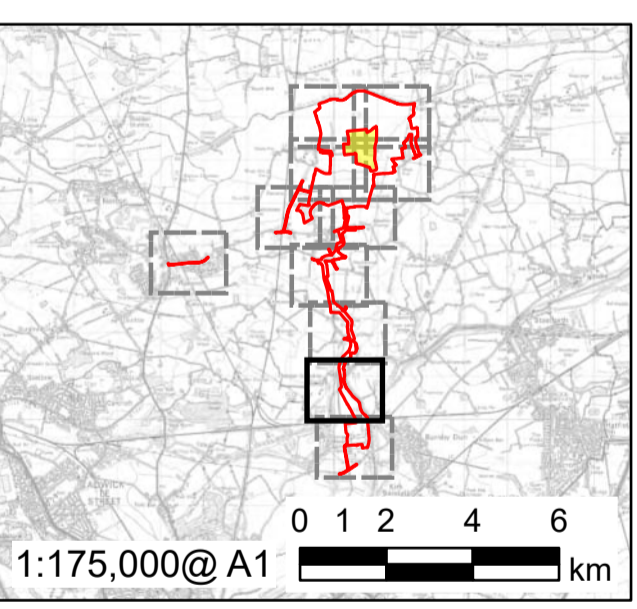
This drawing has been prepared for the use of AECOM's client. It may not be used, modified, reproduced or relied upon by third parties, except as agreed by AECOM or as required by AECOM, in any way that uses or relies on this drawing without AECOM's express written consent. Do not scale this document. All measurements must be obtained from the stated dimensions.



LEGEND

- Order limits
- Listed Building - Grade II*
- Listed Building - Grade II
- Scheduled Monuments
- ▲ HER Monument (point)
- HER Monument (polygon)

Further information on Statutory and Non-Statutory Sites or Features of the Historic Environment is also included in the Environmental Statement figures [EN101152/6.2]



Reproduced from Ordnance Survey digital map data © Crown copyright 2024. All rights reserved. Licence number 0100031673. © South Yorkshire Archaeology Service 2023. Information based upon Historic Environment Characterisation Data © South Yorkshire Archaeology Service 2008. © North Yorkshire County Council. All archaeological mapping should be regarded as indicative, not definitive. © Historic England 2023. Contains Ordnance Survey data © Crown copyright and database right 2023. The Historic England GIS Data contained in this material was obtained on 21/11/2023. The most publicly available up to date Historic England GIS Data can be obtained from HistoricEngland.org.uk.

| | | | | |
|---------------------|----|-------|------------|-----|
| FOR DCO APPLICATION | AK | JW | 01/10/2024 | 0 |
| REVISION DETAILS | BY | CHECK | DATE | REV |

ISSUE PURPOSE
DCO Application

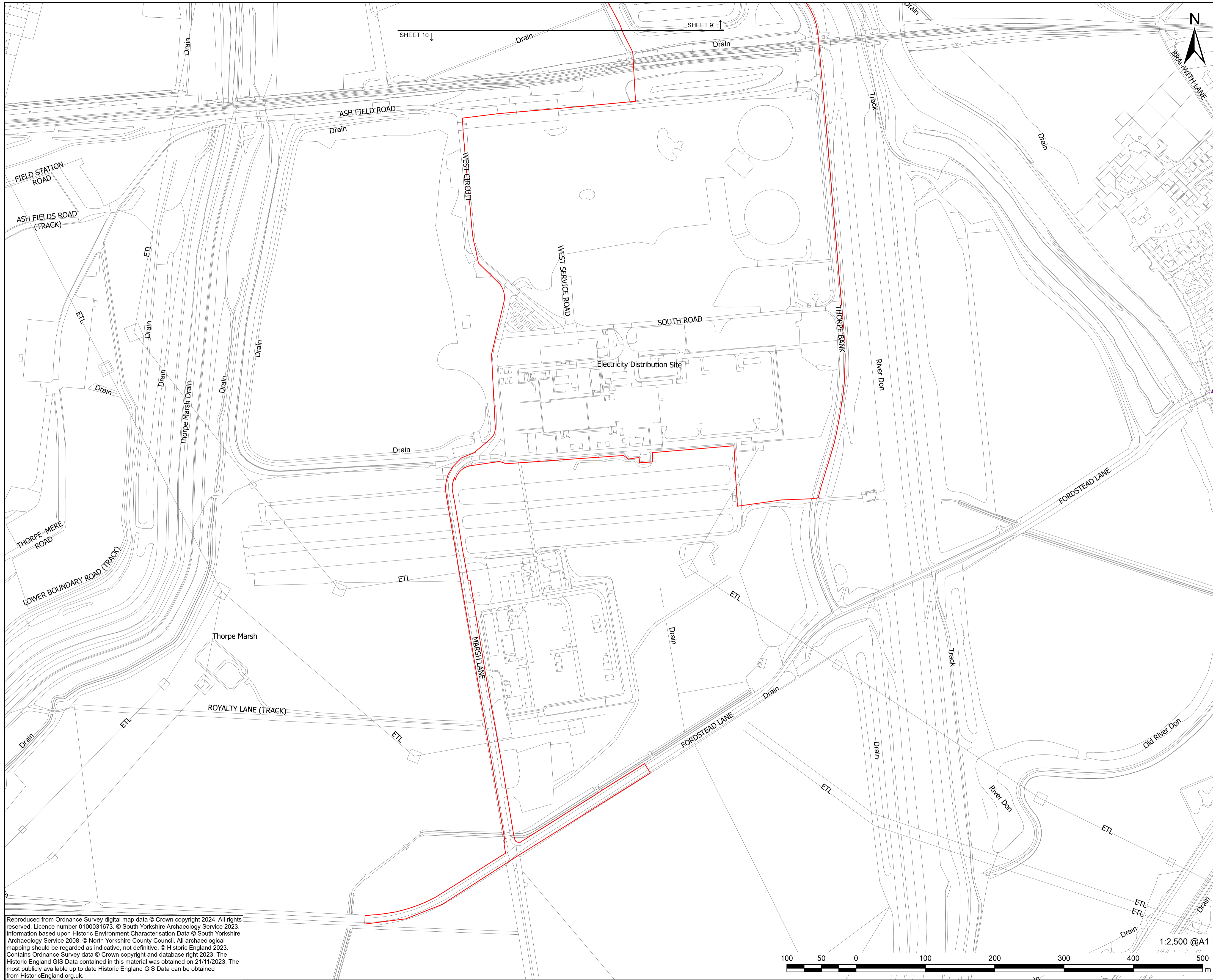
PROJECT NUMBER
60698207

PLAN TITLE
Statutory and Non-Statutory Sites or Features of the Historic Environment - Sheet 9 of 11

REFERENCE NUMBER
EN10152/APP/2.7

LEGISLATION REFERENCE
APFP 2009 Regulation 5(2)(m)

This drawing has been prepared for the use of AECOM's client. It may not be used, modified, reproduced or relied upon by third parties, except as agreed by AECOM or as required by AECOM, and does not constitute an offer of any service whatsoever. All measurements must be obtained from the stated dimensions.



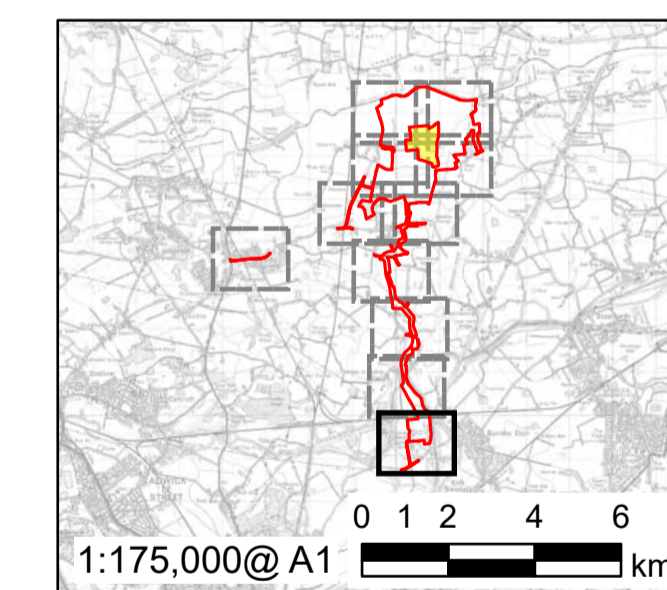
PROJECT
Fenwick Solar Farm

CLIENT
Fenwick Solar Project Limited

CONSULTANT
AECOM Limited
Midpoint
Alencon Link
Basingstoke, RG21 7PP
www.aecom.com

LEGEND
 Order limits
▲ HER Monument (point)

Further information on Statutory and Non-Statutory Sites or Features of the Historic Environment is also included in the Environmental Statement figures [EN101152/6.2]



| | | | | |
|---------------------|----|-------|------------|-----|
| FOR DCO APPLICATION | AK | JW | 01/10/2024 | 0 |
| REVISION DETAILS | BY | CHECK | DATE | REV |

ISSUE PURPOSE

DCO Application

PROJECT NUMBER

60698207

PLAN TITLE

Statutory and Non-Statutory Sites or Features of the Historic Environment - Sheet 10 of 11

REFERENCE NUMBER

EN10152/APP/2.7

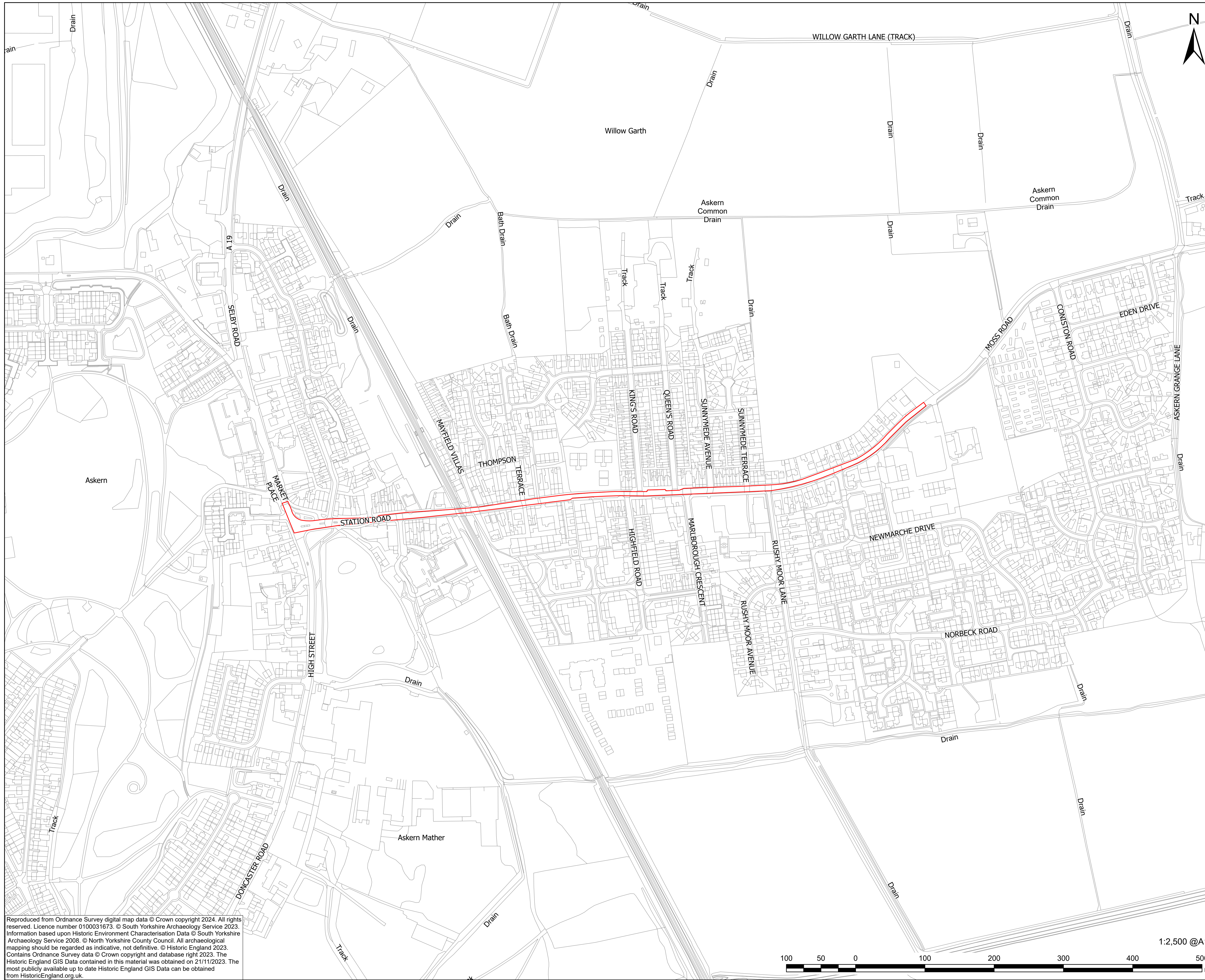
LEGISLATION REFERENCE

APFP 2009 Regulation 5(2)(m)

Reproduced from Ordnance Survey digital map data © Crown copyright 2024. All rights reserved. Licence number 0100031673. © South Yorkshire Archaeology Service 2023. Information based upon Historic Environment Characterisation Data © South Yorkshire Archaeology Service 2008. © North Yorkshire County Council. All archaeological mapping should be regarded as indicative, not definitive. © Historic England 2023. Contains Ordnance Survey data © Crown copyright and database right 2023. The Historic England GIS Data contained in this material was obtained on 21/11/2023. The most publicly available up to date Historic England GIS Data can be obtained from HistoricEngland.org.uk.



This drawing has been prepared for the use of AECOM's client. It may not be used, modified, reproduced or relied upon by third parties, except as agreed by AECOM or as required by law. AECOM accepts no responsibility, and denies any liability whatsoever, to any party that uses or relies on this drawing without AECOM's express written consent. Do not scale this document. All measurements must be obtained from the stated dimensions.



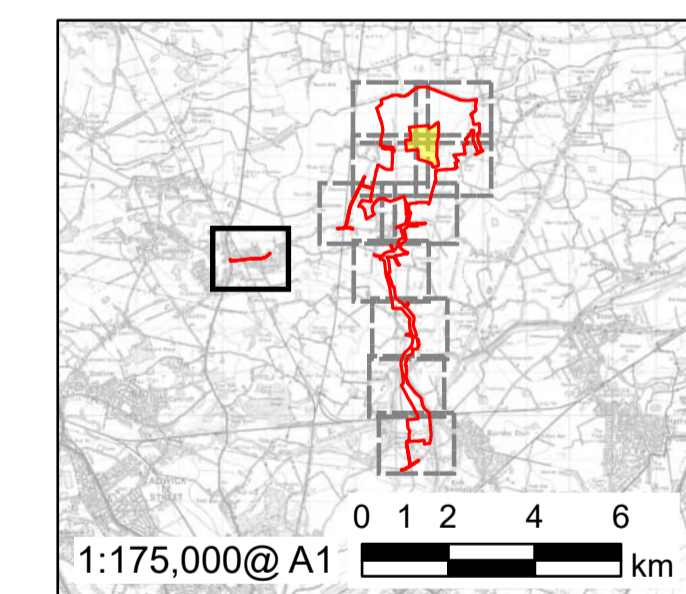
PROJECT
Fenwick Solar Farm

CLIENT
Fenwick Solar Project Limited

CONSULTANT
AECOM Limited
Midpoint
Alencon Link
Basingstoke, RG21 7PP
www.aecom.com

LEGEND
Order limits

Further information on Statutory and Non-Statutory Sites or Features of the Historic Environment is also included in the Environmental Statement figures [EN101152/6.2]



| | | | | |
|---------------------|----|-------|------------|-----|
| FOR DCO APPLICATION | AK | JW | 01/10/2024 | 0 |
| REVISION DETAILS | BY | CHECK | DATE | REV |

ISSUE PURPOSE
DCO Application

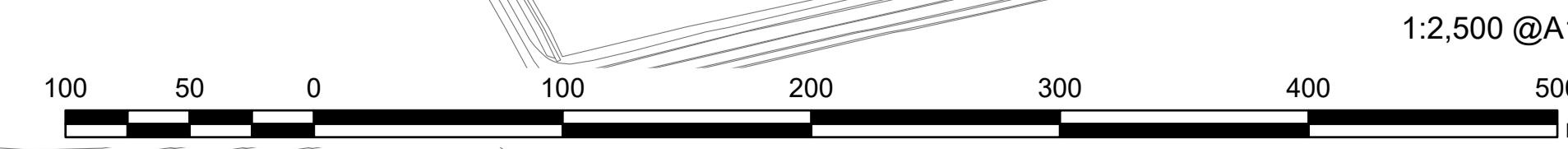
PROJECT NUMBER
60698207

PLAN TITLE
Statutory and Non-Statutory Sites or Features of the Historic Environment - Sheet 11 of 11

REFERENCE NUMBER
EN101152/APP/2.7

LEGISLATION REFERENCE
APFP 2009 Regulation 5(2)(m)

Reproduced from Ordnance Survey digital map data © Crown copyright 2024. All rights reserved. Licence number 0100031673. © South Yorkshire Archaeology Service 2023. Information based upon Historic Environment Characterisation Data © South Yorkshire Archaeology Service 2008. © North Yorkshire County Council. All archaeological mapping should be regarded as indicative, not definitive. © Historic England 2023. Contains Ordnance Survey data © Crown copyright and database right 2023. The Historic England GIS Data contained in this material was obtained on 21/11/2023. The most publicly available up to date Historic England GIS Data can be obtained from HistoricEngland.org.uk.



This drawing has been prepared for the use of AECOM's client. It may not be used, modified, reproduced or relied upon by third parties, except as agreed by AECOM or as required by AECOM, or as required by AECOM, or as required by AECOM, or as required by AECOM. All measurements must be obtained from the stated dimensions.